



Water Withdrawals

Indicator #7056

Overall Assessment

Status: **Mixed**
 Trend: **Unchanging**
 Rationale: **The amount of water withdrawn from the Great Lakes continues to slowly decrease in large part due to shutdown of nuclear power facilities, advances in water efficiency in the industrial sector, and growing public awareness of resource conservation. Limiting withdrawal from the Great Lakes will protect the ecosystem of the entire basin.**

Lake-by-Lake Assessment

Each lake was categorized with a not assessed status and an undetermined trend, indicating that assessments were not made on an individual lake basis.

Purpose

- To use the rate of water withdrawal to help evaluate the sustainability of human activity in the Great Lakes basin.

Ecosystem Objective

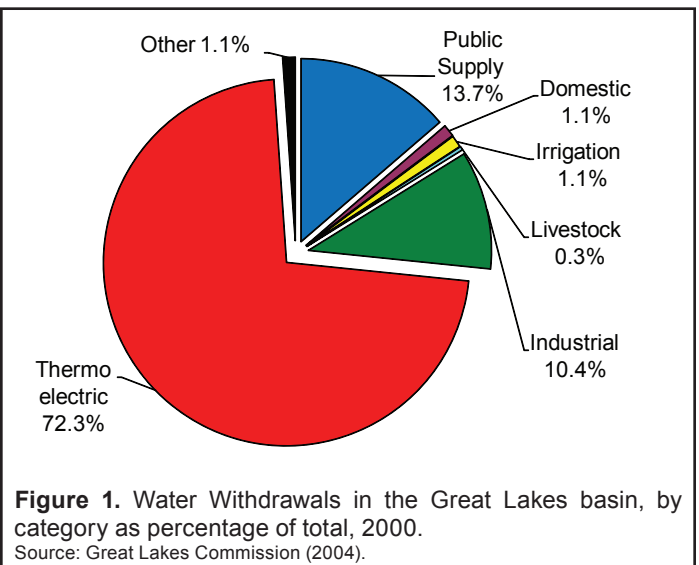
The first objective is to protect the basin's water resources from long-term depletion. Although the volume of the Great Lakes is vast, less than 1% of their waters are renewed annually through precipitation, run-off and infiltration. Most water withdrawn is returned to the watershed, but water can be lost due to evapotranspiration, incorporation into manufactured goods, or diversion to other drainage basins. In this sense, the waters of the Great Lakes can be considered a non-renewable resource.

The second objective is to minimize the ecological impacts stemming from water withdrawals. The act of withdrawing water can shift the flow regime, which in turn can affect the health of aquatic ecosystems. Water that is returned to the basin after human use can also introduce contaminants, thermal pollution or invasive species into the watershed. The process of withdrawing, treating and transporting water also requires energy.

State of the Ecosystem

Water was withdrawn from the Great Lakes basin at a rate of 164 billion liters per day (43,292 million gallons per day (MGD)) in 2004, with almost two-thirds withdrawn in the United States (106,836 million liters per day (MLD) (28,223 MGD)) and the remaining one-third withdrawn in Canada (57,046 MLD (15,070 MGD)). Self-supplying thermoelectric and industrial users withdrew over 80% of the total. Public water systems, which are the municipal systems that supply households, commercial users and other facilities, comprised 14% of withdrawals. The rural sector, which includes both domestic and agricultural users, withdrew 2%, with the remaining 3% used for environmental, recreation, navigation and quality control purposes. Hydroelectric use, which is considered "in-stream use" because water is not actually removed from its source, accounted for additional withdrawals at a rate of 3,062 billion liters per day (809,117 MGD) (Fig. 1, GLC 2006).

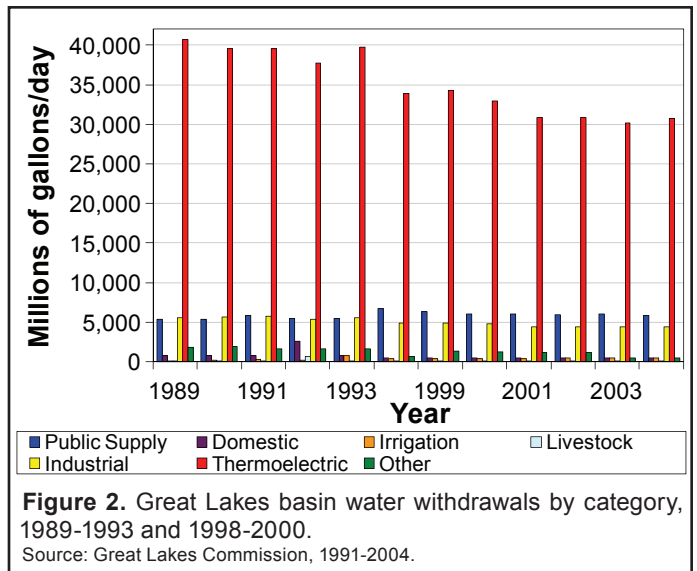
Withdrawal rates in the late 1990s were below their historical peaks and do not appear to be increasing at present. In the United States, withdrawals have dropped by more than 20% since 1980, following rapid increases from the 1950s onwards (USGS



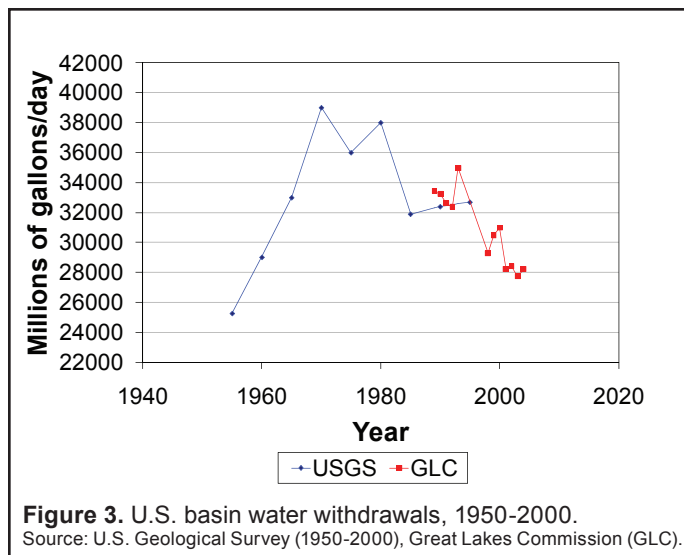
STATE OF THE GREAT LAKES 2009

1950-2000)¹. Canadian withdrawals continued rising until the mid-1990s, but have decreased by roughly 30% since then (Harris and Tate 1999)². In both countries, the recent declines have been caused by the shutdown of nuclear power facilities, advances in water efficiency in the industrial sector, and growing public awareness on resource conservation. Part of the decrease, however, may be attributed to improvements in data collection methods over time (USGS 1985). Refer to Figures 2, 3 and 4.

The majority of water withdrawn is returned to the basin through run-off and discharge. Approximately 5% is made unavailable, however, through evapotranspiration or incorporation into manufactured products. This quantity, referred to as

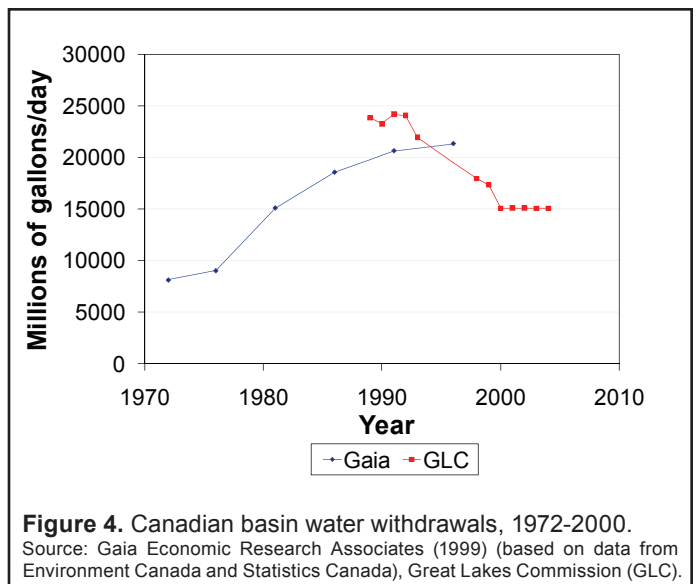


“consumptive use,” represents the volume of water that is depleted due to human activity. It is argued that consumptive use, rather than total water withdrawals, provides a more suitable indicator on the sustainability of human water use in the region. Basin-wide consumptive use was estimated at 7,199 MLD (1,901 MGD) in 2004. Although there is no consensus on an optimal rate of consumptive use, a loss of this magnitude does not appear to be placing significant pressure on water resources. The



long-term Net Basin Supply of water (sum of precipitation and run-off, minus natural evapotranspiration), which represents the maximum volume that can be consumed without permanently reducing the availability of water, and equals the volume of water discharged from Lake Ontario into the St. Lawrence River, is estimated to be 500,723 MLD (132,277 MGD) (estimate is for 1990-1999 period) (Environment Canada 2004). It should be noted, however, that focusing on these basin-wide figures can obscure pressures at the local watershed level.

Calculating consumptive use is a major challenge because of the difficulty in tracking the movement of water through the hydrologic cycle. Consumptive use is currently inferred by



1 USGS estimates show water withdrawals in the U.S. Great Lakes watershed increasing from 95,691 MLD (25,279 MGD) in 1955 to a peak in the 136-148,000 MLD (36-39,000 MGD) range during the 1970 to 80 period, but dropping to the 117-121,000 MLD (31-32,000 MGD) range from 1985 to 1995. GLC reported U.S. water withdrawals in the 121-129,000 MLD (32-34,000 MGD) range for 1989 to 1993, and around 114,000 MLD (30,000 MGD) since 1998, with 117,261 MLD (30,977 MGD) in 2000.

2 Historical Canadian data from Gaia Economic Research Associates (GERA) report, and are based on data from Statistics Canada and Environment Canada. GERA reported that Canadian water withdrawals increased from 30,798 MLD (8,136 MGD) in 1972 to 80,690 MLD (21,316 MGD) in 1996. GLC reported Canadian withdrawals of 79-91,000 MLD (21-24,000 MGD) in 1989 to 1993, around 64,000 MLD (17,000 MGD) for 1998 and 1999, and 57,046 MLD (15,070 MGD) in 2000.

multiplying withdrawals against various coefficients, depending on use type. For instance, it is assumed that thermoelectric users consume as little as 1% of withdrawals, compared to a loss rate of 70-90% for irrigation (GLC 2003). There are inconsistencies in the coefficients used by the various states and provinces. Estimating techniques were even more rudimentary in the past, making it problematic to discuss historical consumptive use trends. Due to these data quality concerns, it may not yet be appropriate to consider consumptive use as a water use indicator.

Water removals from diversions, by contrast, are monitored more closely, a result of the political attention that prompted the region's governors and premiers to sign in 1985 a voluntary agreement to manage the waters, called the Great Lakes Charter. The Charter required a basin-wide notification and consultation, for any new or increased diversion or consumptive use of the water resources of the basin which exceeds 19 million litres per day average in any 30 day period. Further, the U.S. Water Resources Development Act, 1986, amended in 2000, requires approval of diversions out of the basin by the eight Great Lakes governors. In 2001, the Great Lakes Charter was amended by Annex and was followed the "Great Lakes Basin Sustainable Water Resources Agreement" in 2005 that outlines administrative procedures pertaining to water diversions, consumption uses and withdrawals from the Great Lakes Basin – a virtual ban on diversions.

In Ontario, to enact the 2005 Agreement the *Ontario Water Resources Act* was amended in June 2007 by the *Safe-guarding and Sustaining Ontario's Water Act*. In the United States a *Great Lakes - St. Lawrence River Water Resources Compact* was developed, obtained ratification by the eight Great Lakes States and on October 3, 2008 the U.S. President signed a joint resolution of Congress to approve the Compact and enabling the Compact to become law as of December 8, 2008.

There is growing concern over the depletion of groundwater resources, which cannot be replenished following withdrawal with the same ease as surface water bodies. Groundwater was withdrawn at a rate of 4,264 MLD (1,126 MGD) in 2004, making up 3% of total water withdrawals (GLC 2006). This rate may not have a major effect on the basin as a whole, but high-volume withdrawals have outstripped natural recharge rates in some locations. Rapid groundwater withdrawals in the Chicago-Milwaukee region during the late 1970s produced cones of depression in that local aquifer (Visocky 1997). However, the difficulty in mapping the boundaries of groundwater supplies makes unclear whether the current groundwater withdrawal rate is sustainable.

Pressures

The Great Lakes Charter was instituted in response to concerns over large-scale water diversions and bulk exports to markets such as the arid southwestern United States. There does not appear to be significant momentum for such long distance shipments due to legal and regulatory barriers, as well as technical difficulties and prohibitive costs. In the immediate future, the greatest pressure will come from communities bordering the basin, where existing water supplies are scarce or of poor quality. These localities might look to the Great Lakes as a source of water.

The *Great Lakes - St. Lawrence River Water Resources Compact* has special provisions for communities and counties straddling the Great Lakes basin and does address existing diversions such as the Chicago diversion.

As for withdrawals within the basin, there is no clear trend in forecasting regional water use. Reducing withdrawals, or at least mitigating further increases, will be the key to lessening consumptive use. Public water systems currently account for the bulk of consumptive use, comprising one-third of the total, and withdrawals in this category have been increasing in recent years despite the decline in total withdrawals. Higher water prices have been widely advocated in order to reduce water demand. Observers have noted that European per capita water use is only half the North American level, while prices in Europe are twice as high. However, economists have found that both residential and industrial water demand in the United States and Canada are relatively insensitive to price changes (Renzetti 1999, Burke *et al.* 2001)³. The over-consumption of water in North America may be more a product of lifestyle and lax attitudes. Higher prices may still be crucial for providing public water systems with capital for repairs; this can prevent water losses by fixing system leaks, for example. But reducing the underlying demand may require other strategies in addition to price increases, such as public education on resource conservation and promotion of water-saving technologies.

3 Econometric studies of both residential and industrial water demand consistently display relatively small price elasticities. Literature review on water pricing economics can be found in Renzetti (1999). However, the relationship between water demand and price structure is complex. The introduction of volumetric pricing (metering), as opposed to flat block pricing (unlimited use), is indeed associated with lower water use, perhaps because households become more aware of their water withdrawal rate (Burke *et al.* 2001).

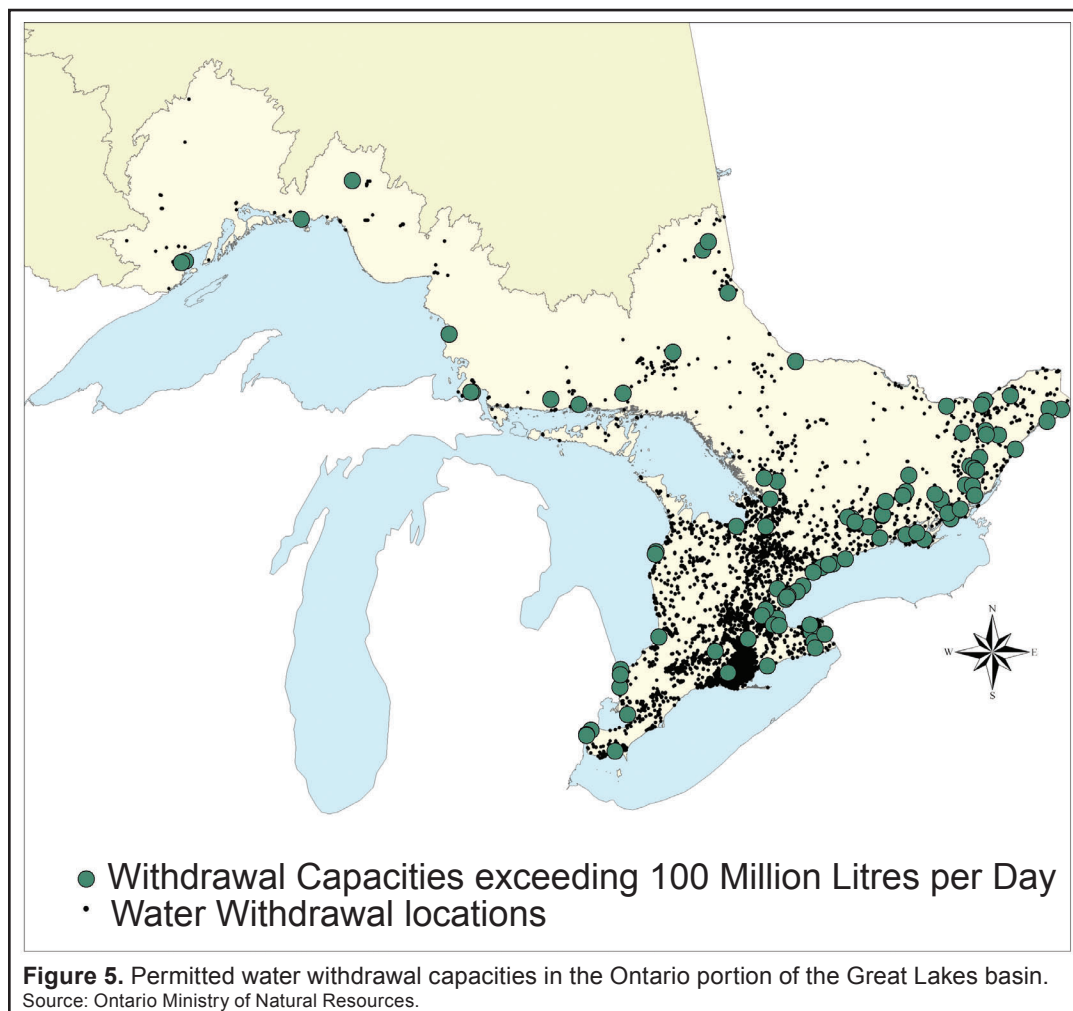
STATE OF THE GREAT LAKES 2009

Assessing the availability of water in the basin will be complicated by factors outside local or human control. Variations in climate and precipitation have produced long-term fluctuations in surface water levels in the past. Global climate change could cause similar impacts; research suggests that water levels may be permanently lower in the future as a result. Differential movement of the Earth's crust, a phenomenon known as isostatic rebound, may exacerbate these effects at a local level. The crust is rising at a faster rate in the northern and eastern portions of the basin, shifting water to the south and west. These crustal movements will not change the total volume of water in the basin, but may affect the availability of water in certain areas.

Management Implications

The Great Lakes-St. Lawrence Basin Sustainable Water Resources Agreement (Agreement) provides a framework for each province and state to pass laws that put in place new protections for basin waters. The good-faith Agreement bans new or increased water diversions out of the basin or from one Great Lakes watershed to another, with limited, strictly regulated exceptions. The Agreement also strengthens water conservation through basin-wide objectives and programs in each state and province, establishes a stronger basin-wide environmental standard for regulating water uses, will build the information and science needed to support sound decision-making (e.g. through required water use reporting by water users), and strengthens regional collaboration (e.g. through the regional review of water management and conservation programs and significant diversion proposals and the periodic assessment of cumulative impacts).

The Agreement is made binding in the United States through a companion interstate compact, the Great Lakes-St. Lawrence River Basin Water Resources Compact. On July 9, 2008, Michigan became the last of the eight Great Lakes states to sign the Compact into law. The United States Congress must endorse the Compact in order for it to become federal law. On October 3, 2008 the U.S.



STATE OF THE GREAT LAKES 2009

President signed a joint resolution of Congress to approve the Compact, enabling the Compact to become law as of December 8, 2008.

Comments from the author(s)

Water withdrawal data is already being compiled on a systemic basis, though improvements can be made in collecting more accurate numbers. Reporting agencies in many jurisdictions do not have, or do not exercise, the statutory authority to collect data directly from water users, relying instead on voluntary reporting, estimates, and models. Provisions of the Agreement and the Compact will require that water users report monthly water use on an annual basis, hence improvements to water use information are anticipated. A regional water use information initiative has been established to facilitate these improvements.

Progress is also necessary in establishing uniform and defensible measures of consumptive use, which is the component of water withdrawals that most clearly signals the sustainability of current water demand. Mapping the point sources of water withdrawals could help identify local watersheds that may be facing significant pressures. In many jurisdictions, water permit or registration programs can provide suitable geographic data. However, only in a few states (Minnesota, Illinois, Indiana and Ohio) are withdrawal data available per registered facility. Permit or registration data, moreover, has limited utility in locating users that are not required to register or obtain permits, such as the rural sector, or facilities with a withdrawal capacity below the statutory threshold (100,000 gallons per day in most jurisdictions.) Refer to Figures 5 and 6.

Further research into the ecological impact of water withdrawals should also be a priority. There is evidence that discharge from industrial and thermoelectric plants, while returning water to the basin, alters the thermal and chemical integrity of the lakes. The release of water at a higher than normal temperature has been cited as facilitating the establishment of non-native species

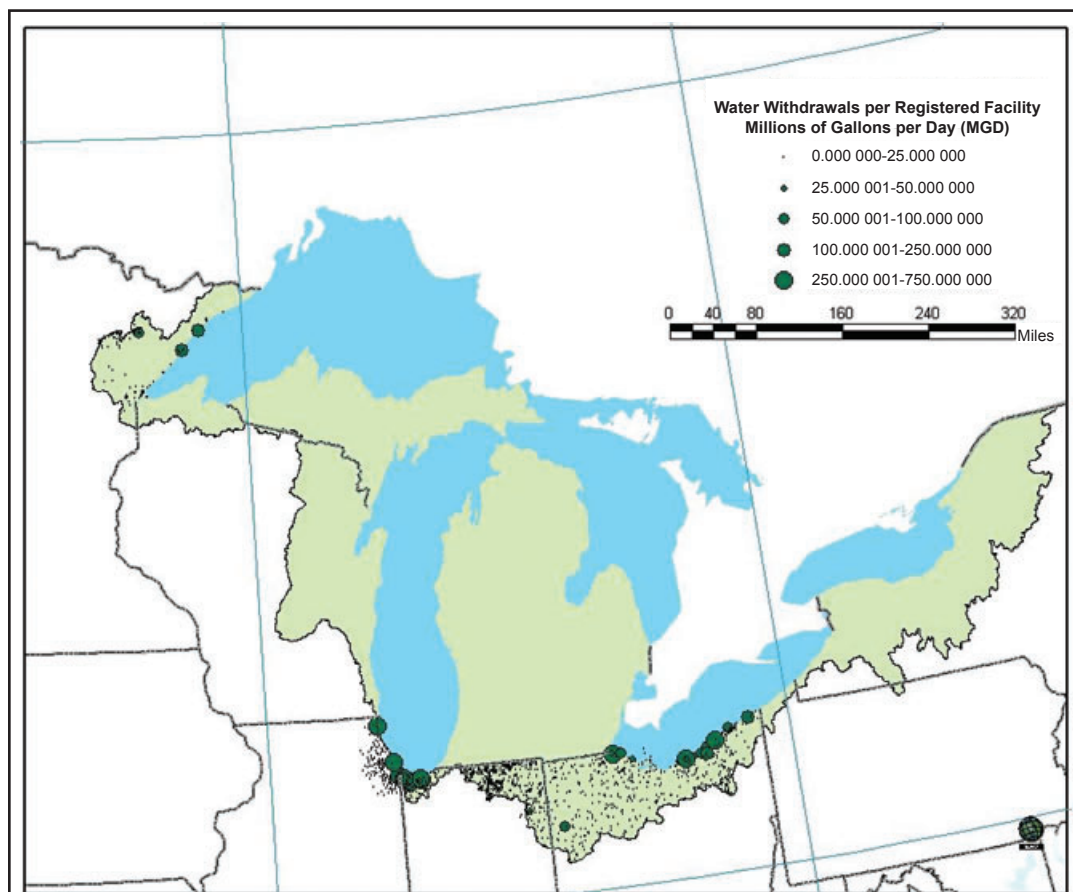


Figure 6. Map of Reported Water Withdrawals at Permitted or Registered Locations in Minnesota, Illinois, Indiana and Ohio.

Source: IL Department of Natural Resources, MN Department of Natural Resources, OH Department of Natural Resources, IN Department of Natural Resources 2009.

STATE OF THE GREAT LAKES 2009

(Mills *et al.* 1993). The changes to the flow regime of water, through hydroelectric dams, internal diversions and canals, and other withdrawal mechanisms, may be impairing the health of aquatic ecosystems. Reductions in groundwater discharge, meanwhile, may have negative impacts on Great Lakes surface water quality. Energy is also required for the process of withdrawing, treating and transporting water. These preliminary findings oblige a better understanding of how the very act of withdrawing water, regardless of whether the water is ultimately returned to the basin, can affect the larger ecosystem. Through the Agreement and Compact, commitments have been made to the development of a regional science strategy and periodic cumulative impact assessments of basin water withdrawals, diversions and consumptive uses, at least every five years.

Assessing Data Quality

Data Characteristics	Strongly Agree	Agree	Neutral or Unknown	Disagree	Strongly Disagree	Not Applicable
1. Data are documented, validated, or quality-assured by a recognized agency or organization	X					
2. Data are traceable to original sources	X					
3. The source of the data is a known, reliable and respected generator of data	X					
4. Geographic coverage and scale of data are appropriate to the Great Lakes basin	X					
5. Data obtained from sources within the U.S. are comparable to those from Canada	X					
6. Uncertainty and variability in the data are documented and within acceptable limits for this indicator report	X					
Clarifying Notes:						

Acknowledgments

Author:

Stephanie D. Ross, U.S. EPA, Great Lakes National Program Office, Chicago, IL (2008)

Rick Czepita, Environment Canada (2008)

Mervyn Han, Environmental Careers Organization, on appointment to U.S. Environmental Protection Agency, Great Lakes National Program Office. (2004)

Contributor:

Rebecca Lameka (Great Lakes Commission), Thomas Crane (Great Lakes Commission), Wendy Leger (Environment Canada), and Fabien Lengelle (International Joint Commission) assisted in obtaining data for this report. Steven Renzetti (Brock University) and Michel Villeneuve (Environment Canada) assisted in explaining water consumption economics. (2004)

Site-specific water withdrawal data courtesy of James Casey (Illinois Department of Natural Resources), Sean Hunt (Minnesota Department of Natural Resources), Paul Spahr (Ohio Department of Natural Resources) and Ralph Spaeth (Indiana Department of Natural Resources). Ontario water permit map courtesy of Danielle Dumoulin (Ontario Ministry of Natural Resources).

Sources

Annin, P. 2006. *The Great Lakes Water Wars*. Washington, D.C; Island Press. 303 p.

Burke, D., Leigh, L., and Sexton, V. 2001. *Municipal water pricing, 1991-1999*. Environment Canada, Environmental Economics Branch.

Environment Canada. 2004. Great Lakes-St. Lawrence Regulation Office.

Great Lakes Commission (GLC). 2003. *Toward a water resources management decision support system for the Great Lakes-St. Lawrence River basin: status of data and information on water resources, water use, and related ecological impacts*. Chapter.3, pp.58-62.

STATE OF THE GREAT LAKES 2009

Great Lakes Commission (GLC). 2005. *Great Lakes regional water use database*. Website available at: <http://www.glc.org/wateruse/database/search.html>.

Great Lakes Commission (GLC). 2006. *Annual Report of the Great Lakes Regional Water Use Database Repository, 2003*.

Great Lakes Commission (GLC). 2006. *Annual Report of the Great Lakes Regional Water Use Database Repository, 2004*.

Harris, J., and Tate, D. 1999. *Water demands in the Canadian section of the Great Lakes basin, 1972-2021*. Gaia Economic Research Associates (GERA) Report, Ottawa, ON.

Mills, E.L., Leach, J.H., Carlton, J.T., and Secor, C.L. 1993. Exotic species in the Great Lakes: a history of biotic crises and anthropogenic introductions. *J. Great Lakes Res.* 19(1):1-54.

Parrish, A. 2006. *Mixed Blessings: The Great Lakes Compact and Agreement, The IJC, and International Dispute Resolution*. Michigan State Law Review. 23 p.

Renzetti, S. 1999. Municipal water supply and sewage treatment: costs, prices and distortions. *The Canadian Journal of Economics*. 32(3):688-704.

U.S. Geological Survey (USGS). 1950-2000. *Estimated Water Use in the United States: circulars published at 5-year intervals since 1950*.

U.S. Geological Survey (USGS). 1985. *Estimated use of water in the United States in 1985*. 68pp.

Visocky, A.P. 1997. Water-level trends and pumpage in the deep bedrock aquifers in the Chicago region, 1991-1995. Illinois State Water Survey Circular 182. Cited in International Joint Commission. 2000. *Protection of the waters of the Great Lakes: final report to the governments of Canada and the United States*. Chapter.6, pp 20-26.

Last Updated

State of the Great Lakes 2009